

NEW THEATRE

Telephone: 31641-2-3

HULL

Licensee and General Manager: Peppino Santangelo

Week Commencing **MONDAY, NOVEMBER 21st, 1949**

NIGHTLY at 7.15

Matinee: SATURDAY at 2.15

Monday, Friday, Saturday (Mat. and Evg.)

Tuesday, Wednesday and Thursday

A MIDSUMMER NIGHT'S DREAM

THE SERVANT OF TWO MASTERS

IN ASSOCIATION WITH THE UNIVERSITY OF HULL AND HULL CULTURE AND LEISURE

THE HULL HISTORY CENTRE

PRESENTS

MANUSCRIPT AND PHOTOGRAPHIC COLLECTIONS

RELATING TO

LITERATURE THEATRE AND DRAMA

AN INTRODUCTION TO MATERIAL HELD AT THE HULL HISTORY CENTRE

Introduction

Hull History Centre holds unique archival and rare book material for anyone interested in researching the history of drama, literature and theatre. The Centre is home to Hull University Archives, Hull City Archives and Hull Local Studies Library.

University of Hull Archives

Influenced by the University of Hull's famous librarian Philip Larkin, the University Archives have long collected papers relating to twentieth century novelists, poets, playwrights and screenwriters with a Hull connection. The archives hold papers relating to many notable individuals including Philip Larkin himself, Stevie Smith, Richard Bean, Alan Plater, Stephen Gallagher, Douglas Dunn, Andrew Motion and Archie Markham. This interest in modern writers has also contributed to the acquisition of collections relating to local theatres, literary associations, poetry publishers and poetry magazines.



Philip Larkin by 'England' border sign at Coldstream in Northumberland, 1973 [U DLV/3/202/3]



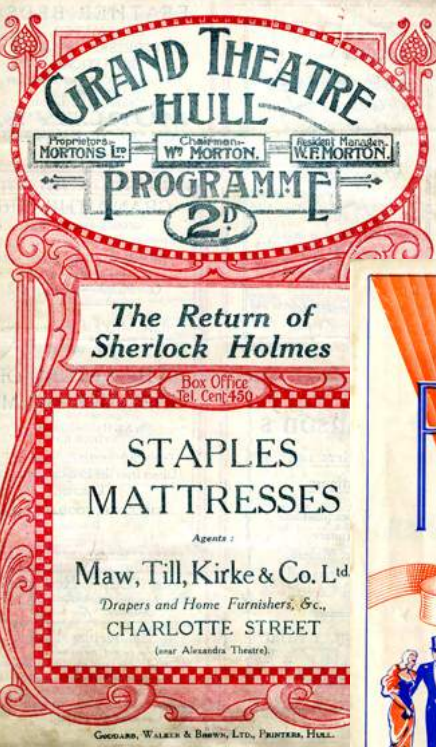
Hull New Theatre exterior, 1954 [Lp.792 NEW/2]



Hull Little Theatre exterior, 1954 [Lp.792 LIT/1]

Hull City Archives

Hull City Archives holds the records of various local literary, drama and theatrical groups, both professional and amateur. Particular strengths also include building plans, photographs and other papers relating to local theatres and entertainment venues, such as Hull New Theatre, the Little Theatre, Hull Theatre Royal and the Tivoli Theatre.



Grand Theatre programme, 1924 [C DIDA/2]

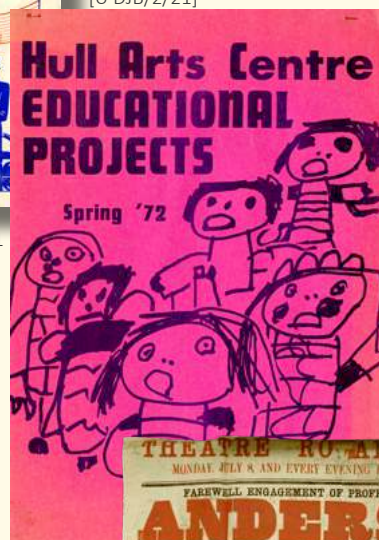


Palace Theatre programme, 1951
[L DTPT/1/24/1]

Hull Local Studies Library

Originally part of the city's Central Library Service, the Local Studies Library collections consist mostly of rare printed and published material, although they do include some archival material. Local Studies collections relate to the city, and to the people, businesses and organisations to which it has been home. There is also material relating to the surrounding areas of the East Riding of Yorkshire. Subjects covered reflect the changing artistic, cultural and literary landscape of the city across the centuries, and help to provide context to the evidence recorded in both the City and University archival material.

Hull Arts Centre Educational
Projects programme, Spring 1972
[U DJB/2/21]



Access

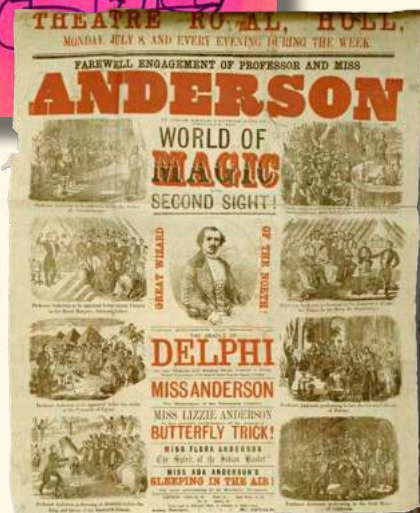
Access to all archival and rare book material is via use of the search room at Hull History Centre. The online catalogue contains descriptions of records, not digitised material. Please note that, in some instances, access to certain records may be restricted under data protection legislation. Access status is indicated on the online catalogue. It is best to contact us if you require further information.

Contents

This guide has been compiled to highlight major collections containing material relating to drama, literature and theatre at Hull History Centre. Collections have been grouped according to themes.

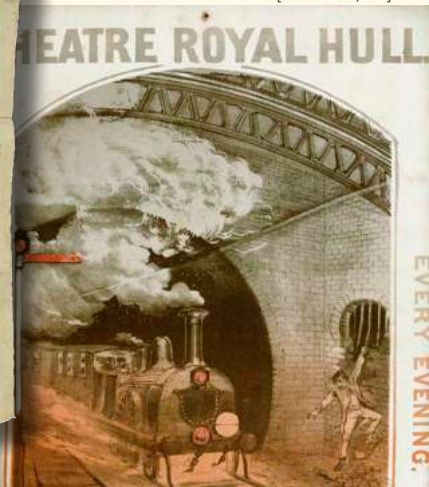
The following subjects are covered:

- Local Theatres
- Playwrights and Screenwriters
- Drama Groups and Actors
- Researching theatrical venues
- Philip Larkin Collections
- Literary Associations
- Novelists
- Poets and Poetry
- Poetry Publishers and Magazines



Hull Theatre Royal playbill, 1866-1867 [U DP215/8]

Hull Theatre Royal playbill,
1872-1873 [U DP215/10]



Finding Aids

Material other than that listed in this guide might exist for any given subject within larger collections. For example, letters and diaries relating to theatre visits may be found in collections of family and personal papers.

To help you explore our thousands of collections to find the relevant information for you, we have devised four important ways of searching for information:

MEECH, ANTHONY

HULL TRUCK THEATRE CO.

Souvenir folder, celebrating ten years of the company. 1981.

illus. ports. 30cm.

Contents.

1. Tenth birthday programme: with history of the company.
2. Hull Truck Theatre Company, 1971-81: the first ten years. By Anthony Meech.
Also separate copies of items.

L.792

Leading copies available

Local Studies Card Catalogue

Cards arranged by author and title.

Individual cards give reference numbers for Local Studies library books, which are not yet on the online catalogue.

Example of a Local Studies index card by 'Author'

Online Catalogue

Searchable database hosting completed collection catalogues. Provides detailed descriptions of individual collections across all three repositories. Can be accessed from home at catalogue.hullhistorycentre.org.uk

Search our library and archive collections

Search our catalogues

Search 

Advanced Search



ACTORS

BURGESS, PETER

" Over the Hills and Far Away - some
early strollers "

5 p

in YORKSHIRE HISTORY QUARTERLY
Vol. 5. No 4. May 2000
p. 11-15
h. 9.4

Example of a Local Studies subject index card for 'Actors'

Local Studies Index Cards

Cards arranged by subject.

Individual cards give references and brief descriptions of relevant material from the holdings. Mostly relates to the older book collection, rare book reference material, and newspaper holdings. This index can be accessed in the History Centre library area.

City Archives Index Cards

Cards arranged by surname and by street name. Individual cards give references to occurrence of individuals and streets within the official records of the city council. Mostly relates to criminal records, planning and building regulations, and health department photographs. This index can be accessed in the History Centre search room.

5	Theatre Royal, 61-63, Hamner St
Deeds	
Landlord: Admin	
Leases	
Internal Records	
Description	
Views: Internal	
External	
Plans	BRh 2400 (1822)

Example of a City Council street index card for Hull Theatre Royal

Helpful Advice: Keywords

Having a targeted approach to searching catalogues is vital for identifying as much information as possible. It can be helpful to draw up a list of similes around key subject areas, to ensure that descriptive variance is accounted for when searching.

Using variant name spellings for individuals and places of interest might also return more results. If searching for events, make sure to incorporate the various words used to refer to individual events. In the case of individuals, it can be helpful to begin with surnames and first names, then widen your search to include surnames and an initial, and finally surnames only.

Remember to use contextual details and dates within descriptions to help you to identify whether something might be relevant.

Local Theatres

The study of local theatres is strongly supported by material from collections in our holdings. These collections could support research into the history of theatres in Hull, travelling theatrical companies and productions, the changing nature of advertising, and the history of local programme and playbill printers.

Spotlight Collection

Little and New Theatres, 1789-1958 [C DFBN]

Fact: Hull Repertory Theatre Company was founded in 1924, performing in the Lecture Hall at the Assembly Rooms in Kingston Square. The productions were so successful that the rooms were renamed the 'Little Theatre'.

Content: Includes programmes, press cuttings, minutes, reports, and financial papers.



Hull Theatre Royal playbill, 1872-1873 [U DP215/10]



Hull New Theatre programme, 1949 [L DTNT/1/15/28]



Hull New Theatre, 1954 [C DIDA/4]

Spotlight Collection

Hull New Theatre Programmes, 1939-2018 [L DTNT]

Fact: Hull New Theatre opened in 1939 as a successor to the Hull Repertory Theatre Company.

Content: Includes theatre programmes produced for various types of productions performed at Hull New Theatre.

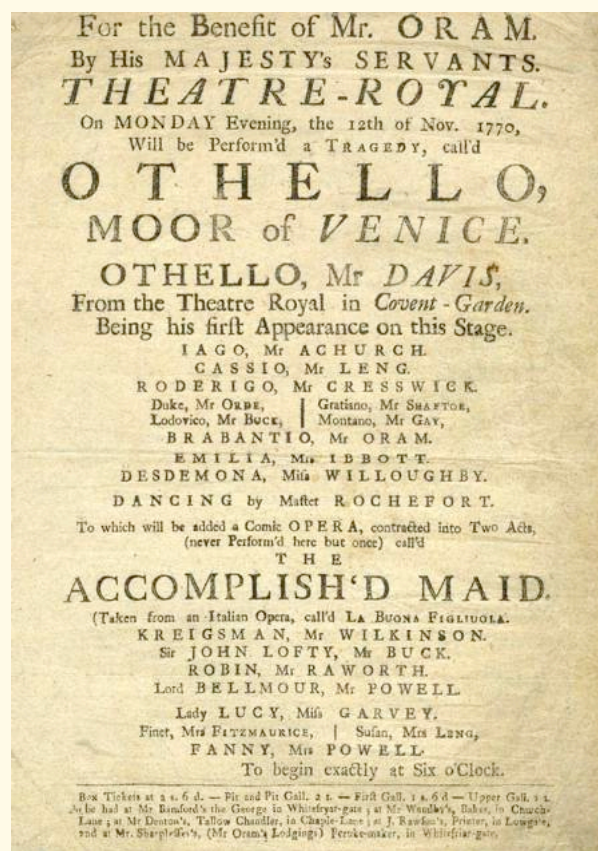
Spotlight Collection

Hull Theatre Royal Programmes, 1770-1872

[L DTTR]

Fact: Hull Theatre Royal opened in 1768 on Finkle Street. The theatre moved to larger premises on Humber Street in 1810, but after being destroyed twice by fire, it finally closed its doors in 1909.

Content: Includes theatre programmes produced for various types of productions performed at Hull Theatre Royal.



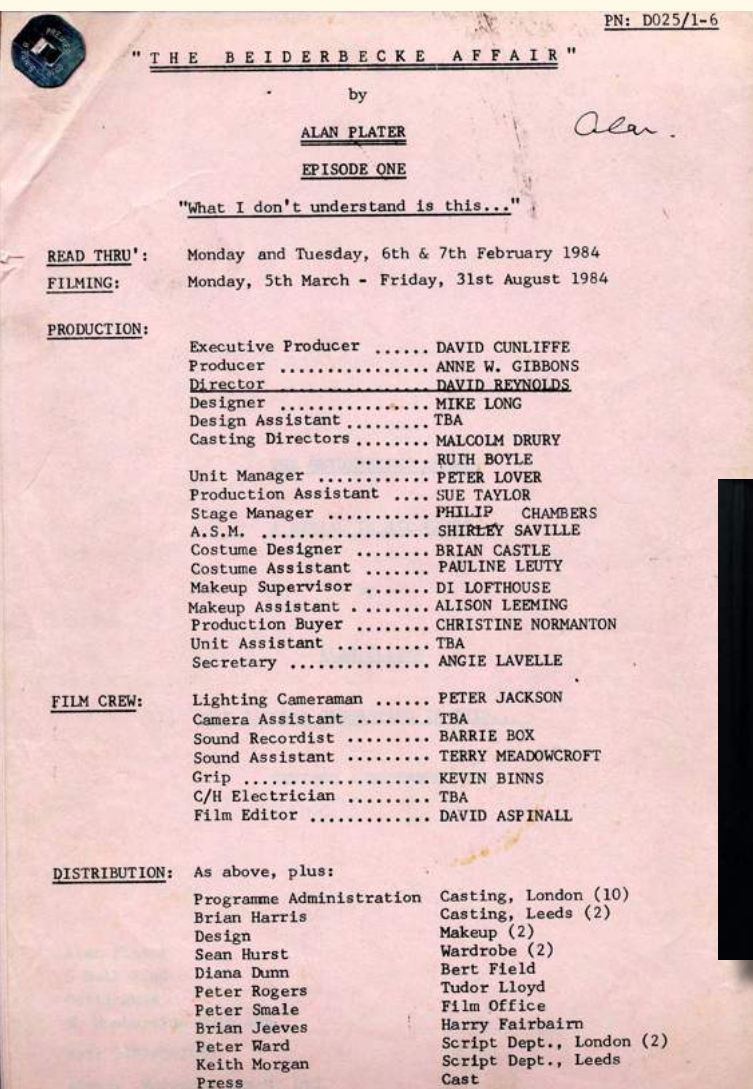
Theatre Royal Hull programme, 1770 [L DTTR/1/1/2]

Further collections and material

- Hull New Theatre, 1944-1945 (programmes) [C DIAG]
- Grand Theatre, 1904-1954 (programmes, souvenir booklets) [C DIDA]
- Little Theatre, 1937-1939 (programmes) [C DIDU]
- Grand Theatre, c.1900 (photograph, article) [C DIPW]
- Records of Mr George William Ashton, Manager of the Tivoli Theatre, c.1910s-1920s (employment agreement, correspondence, photographs) [C DITT]
- Programmes for concerts at Hull venues, 1894-1908 [C DMX/45]
- Theatre programmes for performances in Hull, Grand and Alexandra Theatres, 1913-1938 [C DMX/280]
- Hull Cultural Services Committee records, 1982-1983 (marketing papers relating to Hull New Theatre) [C TCCS/3]
- Alexandra Theatre, 1902-1937 (programmes, playbills) [L DTAT]
- Grand Theatre, 1893-1930 (programmes) [L DTGT]
- Little Theatre, 1926-1935 (programmes) [L DTLT]
- Palace Theatre, 1928-1956 (programmes) [L DTPT]
- Tivoli Theatre, 1927-1954 (programmes) [L DTT]
- Theatre and Radio files compiled by Janet Blackman, 1957-2012 (Hull Arts Centre, Humberside Theatre, Hull Truck) [U DJB/2]
- Hull Arts Centre, 20th cent. [U DJB/3]
- Theatre miscellany, 1759-1853 (sketchbook, photographs, playbills, press cuttings) [U DP157]
- York Theatre Royal Circuit, 1813-1833 (correspondence) [U DP164]
- York Theatre Royal Circuit, 1828-1830 (accounts) [U DP208/1-2]
- Hull Theatre Royal playbills, 1796-1881 [U DP215]
- Hull Theatre Programmes, 1924-1947 [U DX304]
- Theatre Playbills, 1760s-1970s [U PN]
- Local Studies Library theatre section [L 792]

Playwrights and Screenwriters

Local twentieth century playwrights and screenwriters are well represented amongst our collections. These collections could support literary analysis of plays by local writers, research into plays produced for local audiences, and research into the creative processes of playwrights and screenwriters.



Spotlight Collection

Alan Plater, 1940s-2000s [U DPR]

Fact: Alan Plater was born in Jarrow, but grew up in Hull. He would joke that his family left Jarrow shortly after the Great Depression, and arrived in Hull just in time for the Blitz!

Content: Includes press cuttings, draft and final scripts, correspondence, photographs, programmes, audio-visual material, and publicity material.



Alan Plater, n.d. [U DPR]

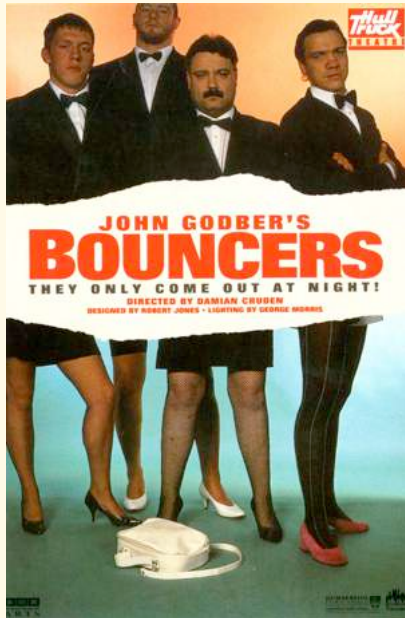
Script for Ep. 1 of the TV series 'The Beiderbecke Affair' by Alan Plater, 1985 [U DPR/3/46]

Spotlight Collection

John Godber, 1979-2006 [U DJG]

Fact: In 1993, Godber was named by the 'Plays and Players Yearbook' as the third most performed playwright in the UK, after William Shakespeare and Alan Ayckbourn!

Content: Includes notebooks, scripts, correspondence, scrapbooks, publicity material, programmes and photographs.



Spotlight Collection

Richard Bean, 1968-2018 [U DRBE]

Fact: Hull-born playwright Richard Bean was asked to write a play for Hull 2017 City of Culture. The result, 'The Hypocrite', is a comedy about Sir John Hotham who refused Charles II entry into Hull, thus arguably beginning the English Civil War.

Content: Includes correspondence, research notes, press cuttings, subject files and draft scripts.

Promotional postcard for 'Bouncers' by John Godber, 2003 [U DJG/1/24]

Act 1 Scene 1

(As the audience take their seats the skiffle band plays. Lights down. 1963, April, mid morning. A room in Charlie's house in Brighton. A framed photo of Queen Elizabeth II at coronation onstage. Charlie, Harry Dangle, Alan Dangle, Pauline, Lloyd, Dolly and other friends and family. Hardly anything remains from a buffet of typically English party food. Maybe one lone cheese and pineapple on a stick, and some peanuts. A party can of beer etc. All very lively and jolly, with the skiffle band playing, laughter, drinks, dancing. The song finishes. Pauline and Alan kiss. They toast "Pauline & Alan". Charlie taps a glass for quiet.)

Dolly	Come on Charlie! Give us a speech!
Lloyd	Speech!
Charlie	I don't like public speaking. I'd rather jump out of an aeroplane.
Lloyd	Go on then!
Charlie	I've only ever spoken three times, formally, in public, in my life, and each time I've been banged up by the judge straight afterwards! I done me best bringing up Pauline, on me own, after her muvver... <i>(chokes)</i> ...sorry...
Lloyd	- doin' well Charlie.
Charlie	- I've had to be her dad and her mum after her muvver... <i>(chokes)</i>
Pauline	- It's alright dad.
Charlie	- ...after her muvver left me and went to live in Spain. It's a disappointment that Jean can't be here in Brighton at her daughter's engagement party, and a shame she can't even afford a stamp for a card neither. But I'm not gonna go on about it. Alan. Welcome to my family. I always wanted a son, and me and Jean had been trying for a couple of years before she... But a man can't whatsaname a son, not on his own, can he. Not yet anyway. I'd like to thank Alan's father, my solicitor, where is he?!
Dangle	<i>(Coming forward)</i> Ecce homo!

Script for 'One Man, Two Guvnors' by Richard Bean, 2011 [U DRBE/2/45]

Further collections and material

- Play scripts written by Sidney Carver, 1958-1961 (performed by the Phoenix Players) [C DIC/1]
- Play scripts for the Blue Bell Mummers Group, 1968-c.1969 [C DSHF/3/2]
- Shaw Park School, c.1971 (scripts for plays) [C TED/1/6/1/12]
- Anti-Vivisection plays, 20th cent. (scripts) [U DBV]
- Stephen Gallagher, 1970s-2010 (drafts of short stories, novels, radio and television scripts, research notes) [U DGA]

- George Bernard Shaw letter, 1909 [U DP142]
- Correspondence between Anthony Minghella and Philip Larkin, 1982 [U DPL2/2/11/194]
- Antony Minghella, 1980-2008 (workbooks, scripts, articles, reviews, press cuttings, publicity, programmes) [U DTM]
- War and Pacifism Plays, 1910s (scripts) [U DX76/9, 38]
- Anthony Minghella, 1989-1998 (scripts) [U DX364]
- Local Studies Library drama section [L 822]

Drama Groups and Actors

For anyone interested in studying local professional and amateur drama companies, or local actors, there is a wealth of material across various collections. These collections could also support research into changing cultural tastes of local audiences, and the history of theatre-in-education groups in Hull.

Spotlight Collection

Northern Broadsides Theatre Company, 1990s-2018
[U DNBR]

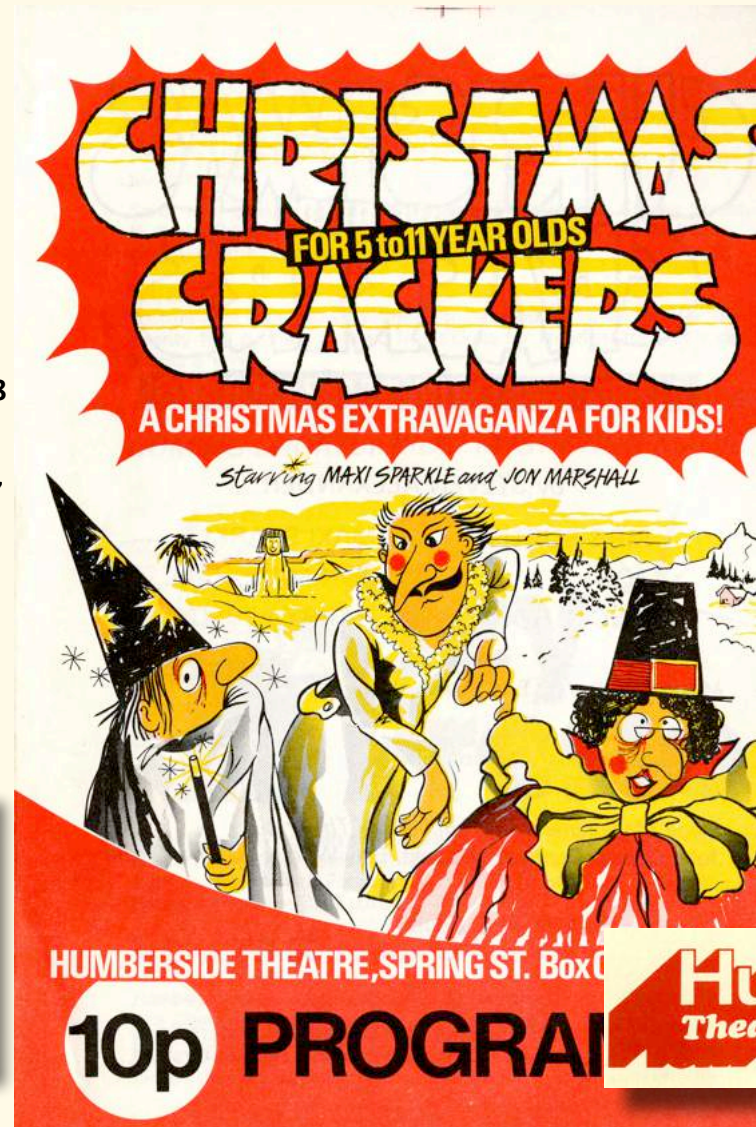
Fact: Established in 1992 by Hull-born actor Barrie Rutter, Northern Broadsides is based at Dean Clough Mill in Halifax and specialises in Shakespearean productions performed in the Yorkshire accent and dialect.

Content: Includes scripts publicity material, production files, correspondence, photographs, programmes and press cuttings.



**Northern
Broadsides**

Northern Broadsides logo, 20th cent. [U DNBR]



Humberside Theatre programme, 1979-1980 [U DJB/2/81]

Spotlight Collection

Out of Joing Theatre Company, 1992-2008 [U DOJ]

Fact: Out of Joint is a London based theatre company founded in 1993 by director Max Stafford-Clark and producer Sonia Friedman.

Content: Includes scripts, reports, returns, accounts and correspondence.

Marie Yessen as 'Toddles', n.d. [C DICS]



Hull Arts Centre
Theatre in Education

Hull Arts Centre Theatre in Education
letterhead, 1970s [U DJB/2/21]

Further collections and material

- Footlight Favourites of Yesteryear – Stories of a great Hull actress, Madge Kendal, n.d. [C DBHM/17/1/41]
- Records of the Willerby Methodist Church Drama Group, 1970-1990 [C DCT/1690-1695]
- The Sherry Sisters, c.1900-1986 (photographs, postcards) [C DICS]
- Hull Jewish Drama Club, 1947-1981 [C DJC/1/16]
- Judeans Drama Section, 1946-1950 (photographs)[C DJC/1/23/6/9]
- Photographs of actress Valerie Halson, n.d. [C DSHO/7/2]
- Drama Section of the Hull CHA Rambling Club, 1932-1972 [C DSRC/6]
- Kingston upon Hull New Theatre Company, 1964-1969 [C TFNT]
- Kingston upon Hull New Theatre Company, 1964-1980 (minutes) [C WNT]
- Maureen Lipman, actress, 1989-1998 (photographs) [Lp.920 LIP]
- Adult Education Department University of Hull, 20th cent. (files relating to various drama courses and classes) [U ADU]
- Pioneer Theatre Society Ltd., 1946-1952 (correspondence, rules, programmes) [U DBN/23]
- Humberside Theatre in Education, 1983-1996 (scripts, project files, administrative files, financial files) [U DHE]
- Company of the Way, 1961-1965 [U DJB/2/2]
- Theatre in Education, 1960s-1970s [U DJB/2/16, 21]
- Humberside Theatre, 1979-1980 [U DJB/2/81]
- Unity Theatre Trust, 1955-2000 (accounts, circulars, correspondence, minutes, agenda, press cuttings, printed material) [U DPM/8]
- Pioneer Players, 1913-1918 (scrapbook, photographs, letters) [U DX295]
- Jan Sendor, c.1970s (letters, slides, books, video recordings) [U DX392]
- Local Studies Library drama section [L 822]
- Local Studies Library biographical section (for individual actors) [L 920]

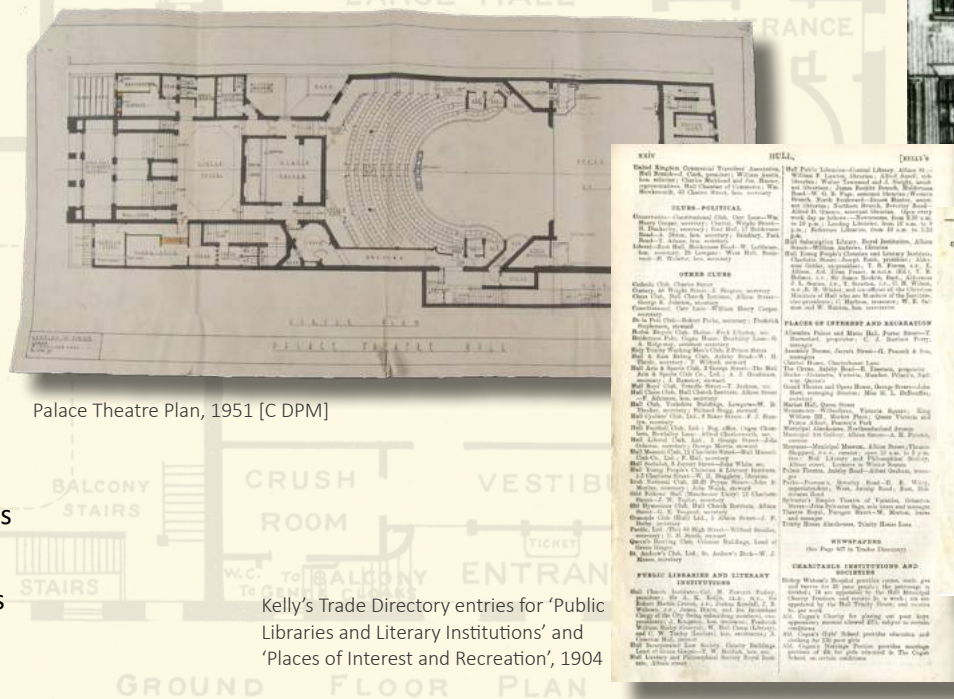
Guide to researching entertainment venues

How to research buildings

There are various types of resources and finding aids available for researching the history of buildings in Hull. First, however, it is a good idea to think about the type of information you're looking for. Are you interested in seeing how the building used to look, do you want to discover who owned the building, or are you trying to research specific architectural details? Photographs and illustrations will satisfy the first researcher, trade directories would answer the questions of the second, and building plans would be required for the third researcher. Knowing what types of record you are interested in, will help staff find the right sources for you.

Online catalogue

This is the best place to start searching for building records available at the Hull History Centre. You can find descriptions of photographs, plans, correspondence and other papers relating to local theatres and entertainment venues online. If you find any descriptions of interest, make a note of the reference number and visit the History Centre's search room. Not all of our records are currently listed online, so you may need to use other finding aids, such as the indexes in our search room, to find references to items of interest, in particular for references concerning building plans.



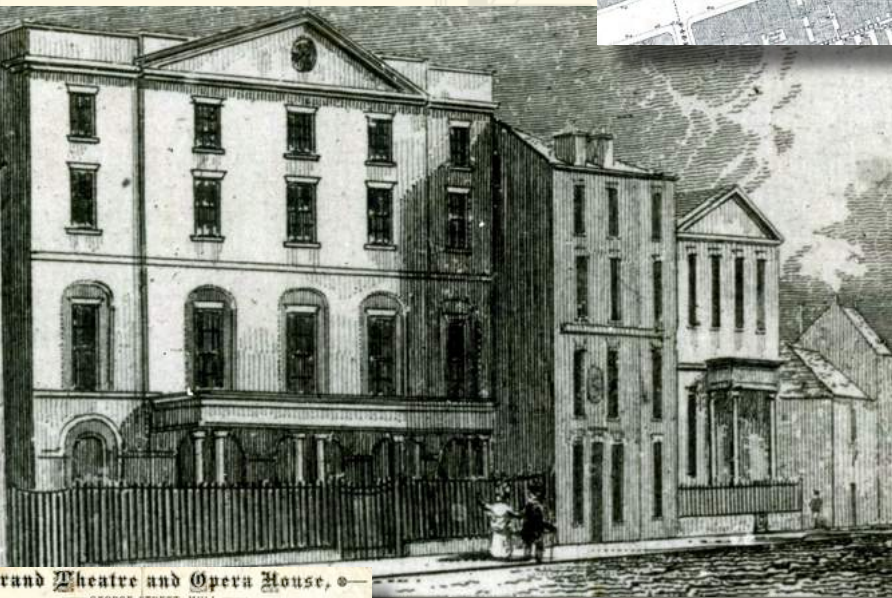
Palace Theatre Plan, 1951 [C DPM]

Kelly's Trade Directory entries for 'Public Libraries and Literary Institutions' and 'Places of Interest and Recreation', 1904

Local Studies Library

The Local Studies Library holds a number of resources and finding aids that may be of interest to those researching Hull venues. These include our collections of OS maps, newspapers, local interest books and card indexes. Most of these resources are available on open access, no library card or ID required!

OS map showing Hull Theatre Royal, 1856



Theatre Royal, Humber Street, 1905 [Lp.792 ROY/2]

Search Room

Trade directories, for tracing ownership and venue location, are available on the open shelves in the Search Room. The street card index is also available in the search room and is invaluable for those researchers interested in finding architectural plans, including original plans and any subsequent alterations.



Hull Grand Theatre and Opera House interior, 1893 [Lp.792 GRA/2]

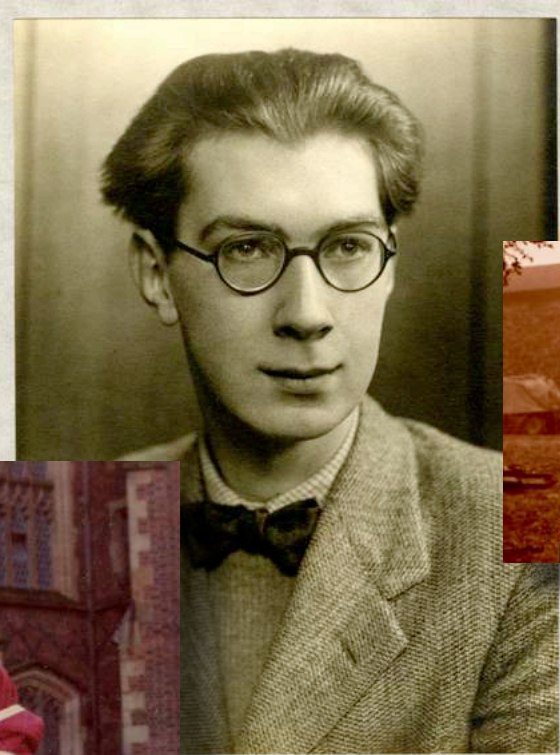
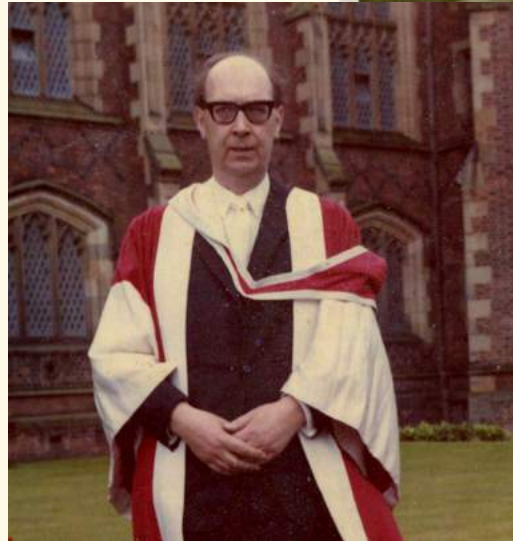
Examples of building records

- Records for 9-11 Finkle Street, 1723-1895 (conveyances, indentures, leases and other papers relating to Hull Theatre Royal) [C DBHS/3/2/2]
- The public rooms, 1828-1834 (deed and drawings) [C DMM/10]
- Theatre plans, 1927-1969 [C DPM/30]
- Architectural drawings for the City Hall and shops, 1902-1948 [C TAA/100]
- Architectural drawings for the New Theatre, 1969-c.1980s [C TAA/150]
- Calculations and correspondence for electrical work at the Little Theatre, 1939 [C TAA/295]
- Hull City Hall planning papers and estimates, 1901-1929 [C TAH/1/2/1]
- Record of war damage and first aid repairs to individual properties, 1939-1945 (Little Theatre) [C TAY/CP/17]
- Record of war damage and first aid repairs to individual properties, 1939-1945 (Hull City Hall) [C TAY/CP/28]
- Illustrations of the Assembly Rooms, 1800s-1880s [Lp.725.83 ASS]
- Photograph of the Alexandra Theatre, c.1900s [Lp.792 ALE/1]
- Photographs and illustrations of Grand Theatre and Opera House, 1893-c.1900s [Lp.792 GRA]
- Photograph of the Little Theatre, 1954 [Lp.792 LIT/1]
- Photographs of the New Theatre, 1954-1968 [Lp.792 NEW]
- Illustrations of the Royal Queen's Theatre, c.1800s [Lp.792 QUE]
- Illustrations of Theatre Royal, 1865-1905 [Lp.792 ROY]
- Photographs of the Tivoli Theatre, 1912-1967 [Lp.792 TIV]
- Local Studies Library buildings and architecture section [L 720]

Philip Larkin

The Hull History Centre provides a unique opportunity to study collections created by Larkin and written in his own words, as well as archives produced by those closest to him.

Philip Arthur Larkin was born in Coventry on 9 August 1922. Larkin began writing while still at school and became joint editor of his school magazine. He went on to study English Literature at St John's College Oxford. After university he became librarian at the public library in Wellington, Shropshire, before moving to the library at University College, Leicester in 1946. Also in 1946, his novel 'Jill' was published by the Fortune Press and his second novel 'A Girl in Winter' appeared on the Faber list to good reviews.



- Papers of Philip Arthur Larkin, 1816-1992 [U DPL]
- Photographs of Philip Larkin, 19th cent.-20th cent. [U DLV]
- Papers of the Larkin Family, c.1890-1983 [U DLN]
- Papers of Anthony Thwaite relating to his editorship of 'Larkin at Sixty', 1979-1981 [U DP188]
- Literary manuscripts donated by Philip Larkin, [1948]-1981 [U DX73]
- Hull Daily Mail Poetry Competition, 1978 [U DX207]
- Medical case file of Philip Larkin, 1985 [U DX270]
- Article on Philip Larkin, 2000 [U DX277]
- Transcriptions of Philip Larkin's poetry workbooks by Professor A.T. Tolley, 1981-2002 [U DX281]
- Letters from Philip Larkin to James Ballard Sutton, c.1938-1952 [U DP174]
- Letters from Philip Larkin to John Norton-Smith, 1964-[1985] [U DP176]
- Letters from Philip Larkin and Douglas Dunn to Ted Tarling, 1970-1997 [U DP177]
- Correspondence between Colin Gunner and Philip Larkin, 1940s-1990 [U DP179]

Larkin co
an
related



In 1950 he was offered the job of sub-librarian at Queen's University, Belfast. It was whilst he was in Ireland that he had one of his most productive periods as a writer. He started two unfinished novels and many of the poems which were to be included in his first collection of poems 'The Less Deceived'. In 1951, he had a small collection, 'XX Poems', privately produced in an edition of 100 copies. Larkin's return to England in 1955 to his new appointment as librarian of Hull University coincided with the publication of 'The Less Deceived', issued by the Hessle-based Marvell Press.

Clockwise (L-R): Larkin in doctoral robes on occasion of his receiving an honorary doctorate from Queen's University Belfast, 1919 [U DLV/3/190/7]; Larkin at Oxford, c.1941 [U DLN/4/4]; Maeve Brennan, 1960s [U DLV/3/147]; Larkin on Hessle foreshore, 1969 [U DLV/3/178]; Larkin and Monica Jones, 1950s [U DLV/3/97]; and the Larkin Family, n.d. [U DLN/4/2]

Collections
and
material

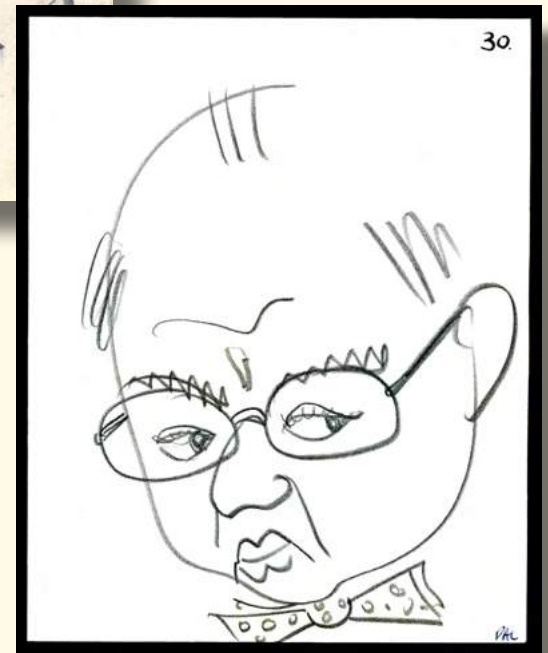
- Correspondence between Philip Larkin and Anthony Thwaite, 1958-1985 [U DP181]
- Letters from James Ballard Sutton to Philip Larkin, 1938-1985 [U DP182]
- Letters from Philip Larkin to John White, 1983-1985 [U DP190]
- Correspondence between A.T. Tolley and Philip Larkin, 1981-1986 [U DP193]
- Letters from Philip Larkin to Michael Shera, 1977-1979 [U DP194]
- Letters of Philip Larkin and Gavin Ewart, 1963-1984 [U DP198]
- Letter from Philip Larkin to G.G. Hough, 1956 [U DP199]
- Correspondence between Philip Larkin and Andrew Motion, 1978-1985 [U DP207]
- Letters from Philip Larkin and Stevie Smith to Anthony and Anne Thwaite, 1955-1983 [U DP214]
- Correspondence between Philip Larkin and Janice Rossen, 1976-1985 [U DX193]
- Letter from Philip Larkin to Lawrence Lerner, 1956 [U DX203]
- Letters from Philip Larkin to Professor Bruce Martin, 1976-1978 [U DX204]
- Letters from Philip Larkin to Barry Bloomfield, 1946-1985 [U DX213]

Throughout the 1950s and 1960s Larkin continued to write poetry. He constantly received requests for poems from editors of magazines and newspapers. The most intriguing aspect to emerge from the collection of magazines and journals which published poems by Larkin is their wide political spectrum. Larkin had no problem allowing poems to appear in the right wing Spectator, the left wing New Statesman or less mainstream journals, such as the New Humanist. What is clear is that he liked to cultivate the 'poet of the people' impression which continued to grow with his increasing fame. Thus, he gave interviews, judged local poetry competitions as well as national ones, and answered most of the many fan letters he received.



Drawing by Philip Larkin pasted into the pocket diary of Eva Larkin, 1950 [U DPL4/9/7]

Philip Larkin self-portrait drawn at a University Library Christmas Party, c.1963 [U LIB/7/16]



- Letter from Philip Larkin to Mrs Constance Saville, 1956 [U DX252]
- Correspondence between Philip Larkin and Brenda Moon, 1962-1985 [U DX257]
- Correspondence between Philip Larkin and Arthur Davies, 1977-1982 [U DX261]
- Letter by Philip Larkin, 1975 [U DX278]
- Letters from Philip Larkin to Ken Eborall, 1979-1985 [U DX290]
- Letters from Philip Larkin to Norman Staveley, 1978-1985 [U DX291]
- Correspondence between Joan Bakewell and Philip Larkin, 1984 [U DX335]
- Photocopied letters from Philip Larkin to Monica Jones, 1946-1984 [U DX341]
- Letters from Philip Larkin, 1975-1976 [U DX370]
- Archives of the University of Hull Brynmor Jones Library, 1927-1996 [U LIB]
- Papers of Anthony Thwaite as literary executor of Philip Larkin, 1985-2012 [U DAT]

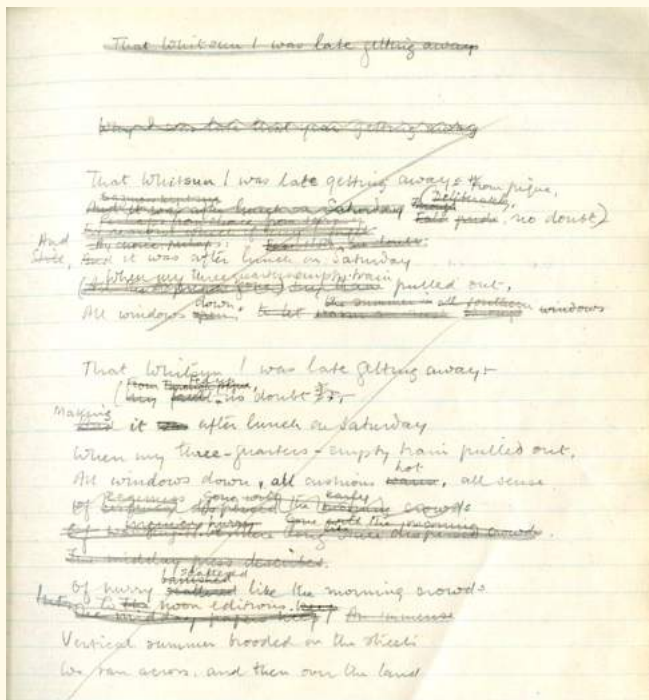
larkin co
av
related

In 1964 'The Whitsun Weddings' was published by Faber and Faber to excellent reviews. 'High Windows' was published in 1975 and received universally favourable reviews and for the first time Larkin achieved success in the American market. 'Aubade', Larkin's last great poem, was published in the Times Literary Supplement in 1977.



Postcard from Philip Larkin to his mother, 1952 [U DLN]

Larkin received numerous awards, including the Queen's Gold Medal for Poetry (1965), seven honorary doctorates, a CBE (1975), the Companion of Literature (1978) and, most significantly, the Companion of Honour (1985). Despite serious illness, Larkin's labours continued almost to the end of his life, with his former library secretary employed to do the typing. He died from cancer on 2 December 1985. He remains widely recognised as one of the most significant writers of modern poetry in English, and as an extremely successful university librarian.



Draft of 'The Whitsun Weddings' by Philip Larkin, 1958 [U DPL/1/4]

- Papers of Monica Jones, 1940s-1990s [U DMA]
- Papers of Maeve Brennan, 1960-2003 [U DMB]
- Papers of Brenda Little relating to Philip Larkin, 1957-1994 [U DX353]
- Memories of Philip Larkin by Janet Carby-Hall (nee Snowden), 1960s [U DX376]
- The North Ship, 1996-2006 [U DX310]
- Papers of the Philip Larkin Society, 20th-21st cent. [U DPLS]
- Papers of Professor Peter Dickinson relating to his work on 'Larkin's Jazz', 1981-2009 [U DX343]
- Settings of Philip Larkin by Brian Blyth Daubney, 2009 [U DX358]
- Papers of Betty Mackereth relating to Philip Larkin, 1957-2010 [U DX372]
- Papers of Winifred Dawson (nee Arnott and previously Bradshaw), 1945-1990 [U DX382]
- Philip Larkin, Local Studies Library Special Collection (books published by and about Philip Larkin)

ollections
nd
aterial

Literary Associations

Hull has been home to numerous literary associations through the centuries, many of whose records now reside at the Hull History Centre. These collections can support research into the history of local literary societies and local literary culture.

Spotlight Collection

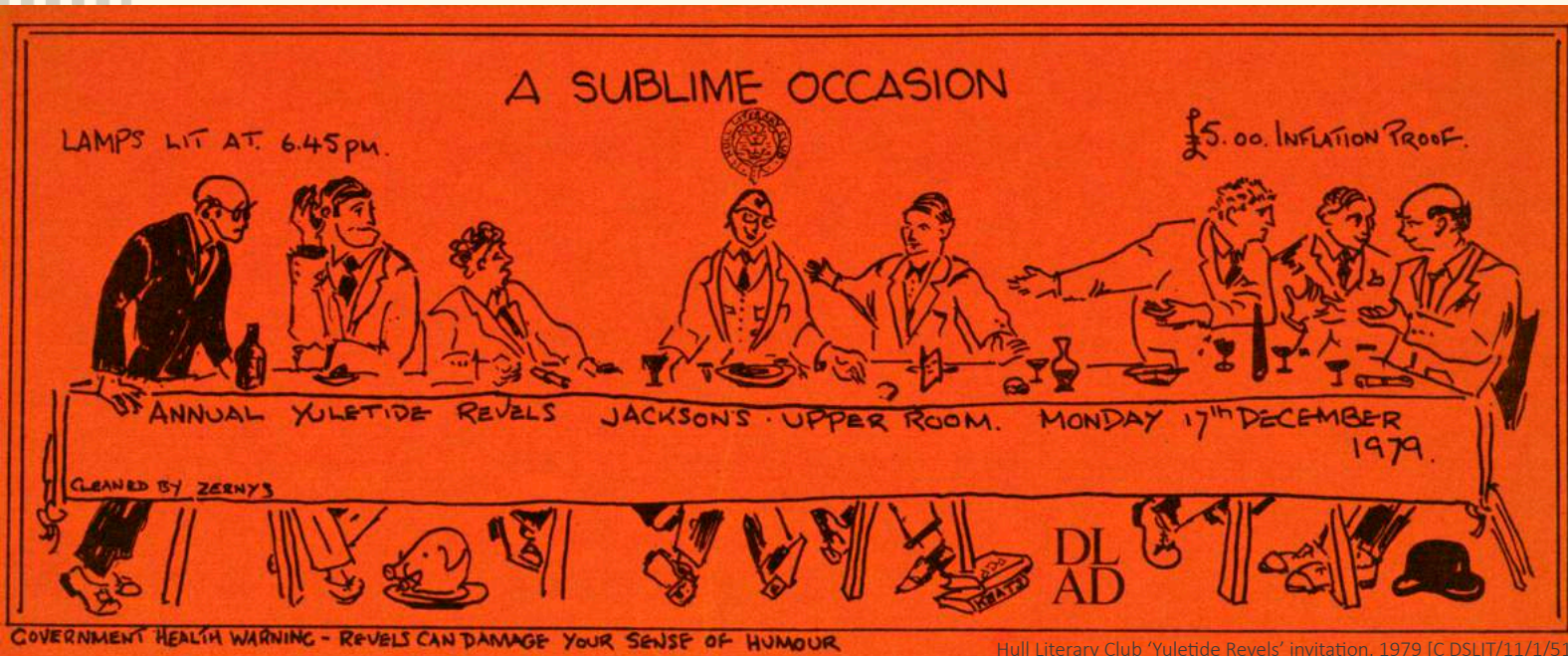
Hull Literary and Philosophical Club, 1807-1937 [C DSLP]

Fact: The Society was formed in 1822 and moved into the Royal Institution on Albion Street in 1855. It aimed to promote literature and science through lectures and the creation of a museum.

Content: Includes minutes, annual reports, accounts and correspondence.



Hull Royal Institution collerhead, mid 1800s [C DMM/14/6]

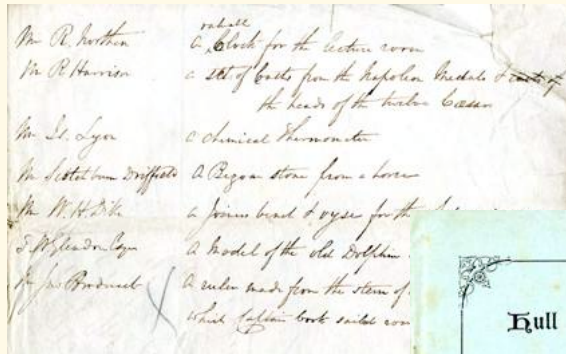


Spotlight Collection

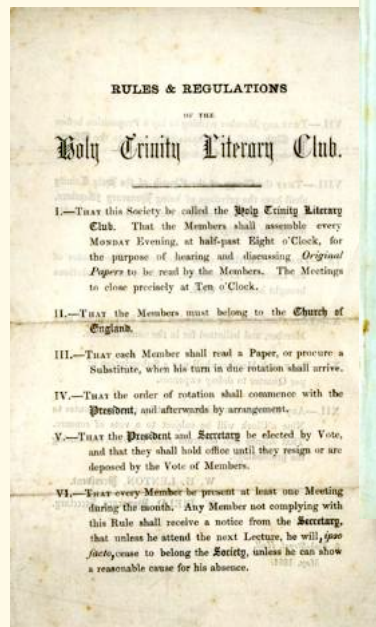
Hull Literary Club, 1879-1982 [U DLC]

Fact: At the foundation of the club in 1879, its stated objectives were to encourage local research and protect and support the interests of local authors, and to form a library of works about Hull and its district.

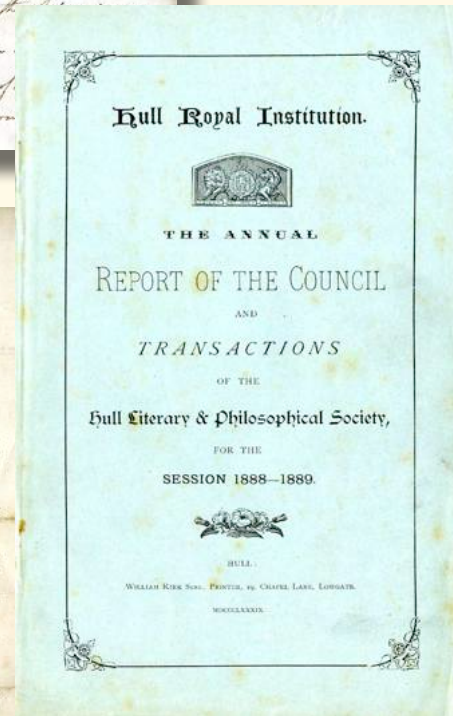
Content: Includes minute books, lectures and addresses, press cuttings, correspondence, and programmes.



List of presents given to the Museum of the Hull Literary and Philosophical Society, c.1830s [C DSL/22]



Rules of the Holy Trinity Literary Club, 1854 [C DMM/11/3]



Annual report of the Hull Literary and Philosophical Society, 1888-1889 [C DMX/323/2/1/1]

Further collections and material

- Hull Young Peoples' Christian and Literary Institute, 1860-1951 (history) [C DBHM/16/43]
- Papers of E.D. Scull, member and speaker at the Hull Literary Club, 1975-2009 [C DIEL]
- Rules of the Holy Trinity Literary Club, 1854 [C DMM/11/3]
- The Hull Literary and Philosophical Society, 1837-1861 [C DMM/14]
- Records relating to the Hull Literary and Philosophical Society and the Hull Royal Institution, 1888-1999 [C DMX/323]
- Records of the Hull Literary and Philosophical Society, 1822-1937 [C DSL]
- Hull Literary Club, 1884-2011 (minutes, speech records, press cuttings, syllabuses, correspondence, literary papers, notes, programmes, membership papers, publications, photographs) [C DSLIT]
- Hull Young Peoples' Christian and Literary institute, 1844-1981 (minutes, financial statements and reports, registers of members, history) [C DSY]
- Young Peoples' Christian and Literary Institute, 1888-1980 (minutes, prospectuses) [C WYP]
- The Literary and Dramatic Society, 1947-1960 [L DCFS/14]
- Hull Young Peoples' Christian and Literary Institute, c.1860 (illustrations and photographs) [Lp.369.4]
- Local Studies Library literary societies and clubs section [L 374.23]

Novelists

Spotlight Collection

Winifred Holtby, 20th cent. [L WH]

Fact: Winifred Holtby's most famous novel, 'South Riding', was published posthumously and was inspired by her experiences living in the East Riding of Yorkshire. The History Centre holds the original manuscript of 'South Riding'.

Content: Includes letters, draft writings, video and audio recordings, journals, reviews, advertising material, books, photographs, notes and press cuttings.

Amongst our holdings, there are a number of collections relating to local novelists. These collections could support biographical research on local novelists, 20th century British female writers, and the creative processes employed by novelists.



Studio portrait of Winifred Holtby, n.d. [L WH/9/9.1/03/01a]



Christopher Mullin, c.1980s [U DMU]

Spotlight Collection

Chris Mullin, 1980s [U DMU]

Fact: Chris Mullin started his career as a journalist before becoming MP for Sunderland South in 1987. He was continually re-elected until he stepped down at the 2010 general election.

Content: Includes draft novels, notes, correspondence and publications.

Typescript of 'Novel on Yellow Paper' by Stevie Smith, c.1935 [U DP156/1]

E.A. Markhar

Further collections and material

- [illegible]

Poets

A significant area of our holdings relates to local poets and poetry. These types of collections could support research on 20th century British poetry, biographical research, and a study of Hull's importance in inspiring local poets.

THE SILVER SPOON.

To the east of the sunrise,
To the west of the moon,
Lies wrapped up in wishes
A huge silver spoon.
However it got there
In such faraway ground
Nobody knows, because
It has never been found.

It is said that an ogre
From the land of Tomtoots
Could not find a shoehorn
To help with his boots.
So, barefooted, he boarded
The moving staircase of stars
And slipped into heaven
Through the rainbow's bars.
On tiptoe he padded
Around and around
Without winking an eyelid
Or making a sound
That would frighten even
The babies mouse
And searched for a shoehorn
All over God's house.

And though he was clever
As Tomtootlers go
And had taken first prize
At the Ogre Show
And though he had grown
Out of seventy-five suits.
He didn't know angels
Wear sandals -- not boots!

First page of the poem 'The silver spoon' by
Howard Sergeant, c.1940 [U DSG/2/3/15]



Spotlight Collection

**Florence Margaret Smith (Stevie Smith),
1935-1969 [U DP156]**

Fact: Born Florence Margaret Smith, she acquired her nickname as a young woman at the age of 19 or 20, whilst riding on one of the London commons with a companion who compared her to Steve Donoghue, a popular jockey of the time.

Content: Includes novel typescript, letter, poem.

Drawing by Stevie Smith for 'The
Frog Prince', c.1966 [U DP209/16]

Spotlight Collection

Archie Markham, 1971-2005 [U DAM]

Fact: Archie Markham (1929-2008) was a Montserratian poet, playwright, novelist and academic. He moved to the UK in 1956, teaching and working in the country until he retired to Paris, France, in 2005.

Content: Includes notebooks, diaries, drafts, proofs, publications, work papers, promotional material, ephemera, correspondence and recordings.

Spotlight Collection

Andrew Marvell, 1660-1693 [C DMX/168]

Fact: Marvell (1621-1678) was a poet, satirist and politician. His most famous poem, 'To His Coy Mistress' was published posthumously in 1681.

Content: Includes letters, illustrations and prints, articles and pedigree.



Photograph of the Andrew Marvell statue
Hull, 1930s [C DMX/168/11]



Drawing by Stevie Smith for 'The Frog Prince', c.1966 [U DP209/16]

Further collections and material

- Letters of Andrew Marvell, 1673-1677 [U DDFA/39/26-29]
- Douglas Dunn, 1967-1987 (notebooks, drafts, correspondence) [U DDD]
- Sir William Empson and Hetta, Lady Empson, 1915-2000 [U DEN]
- Jean Hartley, 1916-2011 (correspondence, writings, press cuttings) [U DJE]
- Julia Varley, 1886-1977 (correspondence, press cuttings, articles, poems, photographs) [U DJV]
- Jay Appleton, 1950s-2015 (poetry, stories, autobiography) [U DJY]
- Hubert Nicholson, 1932-1988 (drafts and proofs of writings, notebooks, autobiography, reviews, publications, correspondence) [U DNI]
- Anthony Thwaite, 1960s-1990s (notebooks, drafts of poems, letters) [U DP155]
- Gavin Ewart, 1935-1982 (correspondence, worksheets, drafts of poems, photographs, interview, prose) [U DP163]
- Andrew Motion, 1976 (notebook) [U DP165]
- Douglas Dunn, 1974-1997 (letters) [U DP177/3-4]
- Anthony Thwaite, 1958-1985 (correspondence) [U DP181]
- Letters to Tony Griffin from Douglas Dunn and other poets, 1974-1990 [U DP183]
- Letters from Douglas Dunn to Peter Didsbury, 1978-1993 [U DP184]
- John Masefield, 1925-1994 (letters, ephemera) [U DP187]
- Anthony Thwaite, 1979-1981 [U DP188]
- Letters from Douglas Dunn to Tony Flynn, 1974-1992 [U DP189]
- Stevie Smith, 1957 (letters) [U DP197]
- Hubert Nicholson, 1976-1996 (poetry, press cuttings, letters) [U DP205]
- Andrew Motion, 1978-1985 (correspondence) [U DP207]
- Stevie Smith, 1946-1969 (letters, drawings) [U DP209]
- Hull Poets – Letters to Tony F. Griffin, 1974-2004 [U DP210]
- Howard Sergeant, 1930-1995 (correspondence, poetry, press cuttings, reviews) [U DSG]
- Papers of Tony F. Griffin, c.1940s-2016 [U DTFG]
- Peter Pindar, 1794-1931 (letters, poems) [U DX41]
- Letters to Frank Noble Wood, 1913-1945 [U DX45]
- Edwin Harry William Meyerstein, 1922-1952 (plays, poems, letters, postcards) [U DX56]
- Letters of John Redwood Anderson, 1963 [U DX59]
- Poem by Christopher Logue, [1960] [U DX62]
- Vernon Watkins, 1948 (proofs of poems) [U DX73/1]
- Papers relating to J. Redwood Anderson, 1963-1971 [U DX80]
- Papers of Fritz Ursinger, 1969-1973 [U DX86]
- Roger McGough, 1974-1983 (notes, poems, letters, cartoons, news cuttings) [U DX92]
- Poem by John Adams, 1976 [U DX111]
- Henry Treece, 1960-1993 (lecture notes, letters, poetry manuscript) [U DX259]
- Illusions of sculpture – Bernard Walker research, 1995 [U DX273]
- Joan Barton, c.1920-c.1980 [U DX340]
- Letters from Howard Sergeant to Janice M. Green, 1978-1987 [U DX349]
- Publications by Cliff Forshaw, 1991-2017 [U DX383]
- Letters from Howard Sergeant and Jean Sergeant to Roger Elkin, 1980s [U DX404]
- Andrew Marvell, Local Studies Library Special Collection (books published by and about Andrew Marvell)
- Local Studies Library poetry section [L 821]

Poetry Publishers and Magazines

There are a number of small but interesting collections and series of papers relating to poetry publishers and magazines within the Hull University Archives. These types of collections could support research into the history of British 20th century independent poetry publishers and magazines, and their importance in establishing poets' careers.

Spotlight Collection

The Literary Archive of Harry Chambers and Peterloo Poets, 1938-2013 [U DPP]

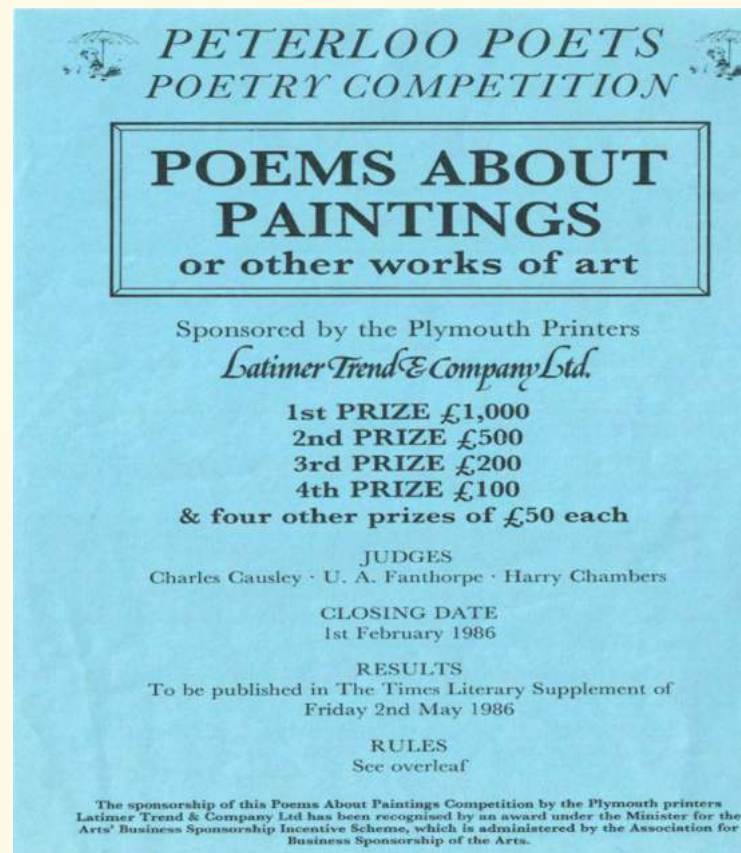
Fact: Established by Harry Chambers in 1976, Peterloo Poets published the work of 131 different poets and 240 different volumes of poetry before Chambers retired in 2009.

Content: Includes poetry publications by Peterloo Poets, author files, reviews, press cuttings, minutes, and correspondence.

'Reality Studios' poetry magazine,
No. 6, 1984 [U DRS/1/2]



'Spectacular Diseases' poetry magazine, No.6, n.d. [U DP191/3/6]



Leaflet for a Peterloo Poets poetry competition, 1986 [U DPP/1/1/35]

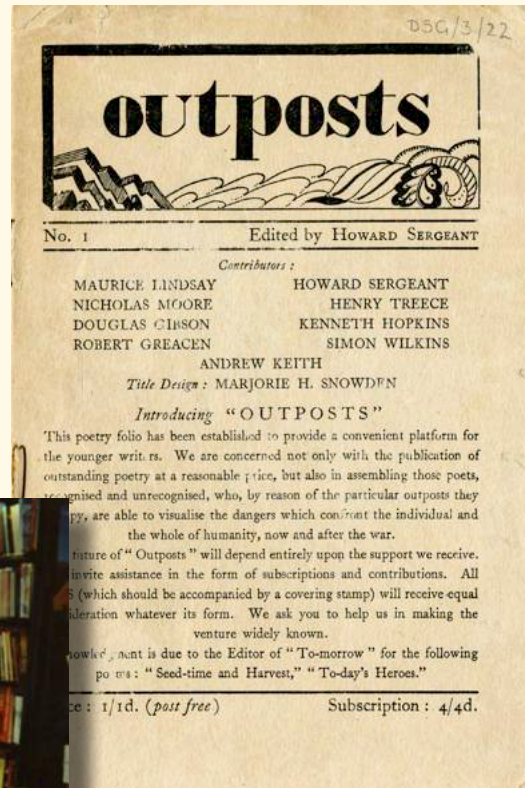
Spotlight Collection

Outposts Poetry Quarterly (ed. Howard Sergeant), 1944-1992 [U DSG/3]

Fact: The first edition of 'Outposts' was edited and published by Howard Sergeant and his friend Lionel Monteith in February 1944, whilst Sergeant was serving with the RAF and Air Ministry during the Second World War.

Content: Includes draft poems, correspondence and a notebook.

'Outposts' poetry magazine, No. 1, 1944 [U DSG/3/22]



Jean Hartley, 1995 [U DJE/2/3/8]

Spotlight Collection

Listen (eds. George and Jean Hartley), 1954-1966 [U DJE/1]

Fact: Founded in 1954, Listen was run by Jean and George Hartley until 1962, publishing poetry by various writers most notably Philip Larkin.

Content: Includes correspondence.

Further collections and material

- Papers relating to poetry magazines, 1950s-1962 [U DP151]
- Wave (ed. Ted Tarling), 1970-1974 (poem transcripts, letters, postcards) [U DP158]
- Phoenix (ed. Harry Chambers), 1960-1976 (letters, drafts and proofs, layout mock-ups) [U DP162]
- New Review (ed. Ian Hamilton), 1974-1978 (drafts, proofs, illustrations, correspondence) [U DP168]
- Spectacular Diseases, 1976-1988 (letters, draft poems, publications) [U DP191]
- Reality Studios (ed. Ken Edwards), 1978-1988 (draft poems, publications, correspondence) [U DRS]

FURTHER INFORMATION AVAILABLE AT:
www.hullhistorycentre.org.uk

SEARCH THE CATALOGUE AT:
catalogue.hullhistorycentre.org.uk



**UNIVERSITY
OF HULL**

